

EXACTRONIC

DRAIN SYSTEM



The EXACTRONIC Drain System (EDS) is designed for both trouble free and total maintenance free draining of water, oil, sludge, scale, and anything else that causes other types of drains to fail.

The EDS is superior to electronic drains that drain on time because timed drains waste air. Wasted air means higher operating costs. The EDS operates only when the reservoir fills. It then drains the reservoir without wasting any air.

The drain is trouble free because condensate and other foreign matter drains out through a motor operated ball valve. The straight through, large opening of the ball valve passes not only condensate but large scale, rust and other particles. When the drain cycle is completed, the powerful gearmotor closes the valve securing an air tight seal every time.

This proven method of draining away accumulations minimizes man-hours required for cleaning, repairing, adjusting, or replacing drains.

AIR SYSTEM PRODUCTS, INC.

51 Beach Ave. Lancaster, NY 14086 (716)683-0435 FAX (716) 683-7128

"The Best in Condensate Drain Technology"

EXACTRONIC DRAIN SYSTEM

DESIGN

The EXACTRONIC DRAIN SYSTEM (EDS) combines the best features of float type drains and timer-operated ball valve drains. Float operated drains do not waste air, but they frequently clog up because they cannot handle scale or sludge through their small internal drain port. Timed ball valves drains will not clog up because they have a large drain port and a self cleaning action. However, timer operated ball valve drains must be continually adjusted to prevent wasting enormous amounts of air.

The EDS will not clog, or waste air.

Operation

The condensation drains into the EDS's non-corrosive reservoir where it accumulates. As the level of condensation rises to the top of the reservoir, a magnetic float rises and closes the contacts of a reed type switch. A signal is sent to an electronic relay that causes the powerful gearmotor to open and drain the reservoir. The result is no air loss and no adjustments ever have to be made. The see through vessel makes visual inspection of the drain's operation very easy.

The EDS does not require any routine maintenance.

Installation

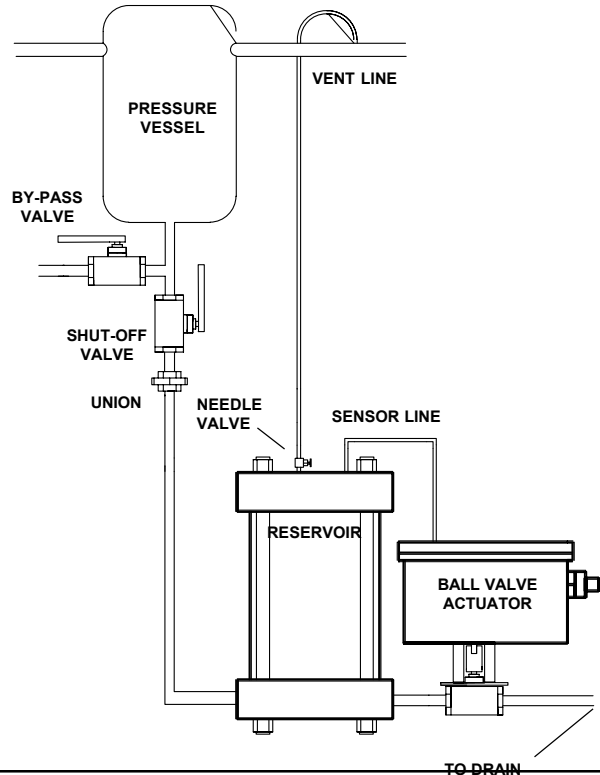
The EDS is ideal for draining accumulations of pressurized condensation, scale, and/or sludge due to the large drain port and self cleaning action. Other types of drains tend to fail under these conditions. Since the EDS works on demand, it can be used on small or large air systems. Installation is as easy as

Features

- Maintenance Free Design
- No Wasted Air - Saves Energy
- See Through Vessel
- One Year Warranty
- Manual Override Button
- Fully Tested
- Optional Alarm contacts
- Made in the U.S.A.

Distributed by:

DIAGRAM 1 RECOMMENDED INSTALLATION



Materials

Weight: 20 lbs.

Height: 11"

Width: 14"

Depth: 6"

Inlet: 1/2"

Outlet: 1/4"

Voltage: 120V, 60 Hz., 1 Ph

Electrical Rating: Nema 4X

Operating Pressure: 200 psi Max.

Operating Temp.: 34° F to 1400° F

Condensate Capacity: 0.4 Gal. per cycle, 100 psi

Reservoir Material: Aluminum and Composite

Model Description

EDS-2BV Exactronic Drain System

EDS-2BV-SOS Exactronic Drain System with Alarm Contacts

All design specifications are subject to change without notice.

AIR SYSTEM PRODUCTS, INC.

51 Beach Ave., Lancaster, NY 14086

(716)683-0435 ■ (716)683-7128